



# THE STRETCH GLASS SOCIETY

*A charitable organization founded April 20, 1974, in Denver, PA.*

[www.StretchGlassSociety.org](http://www.StretchGlassSociety.org) • Follow us on Facebook

## STRETCH OUT DISCUSSION

### Late Period Fenton Stretch Glass

will be the topic of our *Stretch Out* call on Thu, 2/8/18,  
at 8 pm Eastern, 7 Central, 6 Mountain and 5 Pacific Time.

All are welcome to join in by calling

**415-464-6800**, followed by **ID: 04211974#**.

(This is our third discussion on the topic of Late Period Stretch Glass. The first two calls, in May and October 2017, featured samples pieces made for SGS in 1975-6, and Fenton's new in-line stretch glass made in these colors, starting in 1980: Velva Rose, Velva Blue, Stiegel Green, Sunset, Green Apple, and Celeste Blue.)

On this call, we'll discuss these four colors of stretch glass made between 2003 and 2007.

- ❖ **Rosemilk Opalescent Stretch**, a new color, introduced in 2005;
- ❖ **Aquamarine Opalescent Stretch**, another new color, introduced in 2005; and
- ❖ **Aubergine Stretch**, also a new color, in 2007.
- ❖ **Red Stretch**, originally called Ruby, was re-introduced in 2007.
- ❖ **Ruby Amberina Stretch**, very similar to early Ruby and 2007 Red, was made every year from 2003 through 2006.

Please note that selected common pieces appealing to stretch glass collectors, are pictured on the first five pages.

Complete catalog pages for these colors are at the end.

## Page 2 - 2005-2006 Rosemilk Opalescent Stretch

Common pieces appealing to stretch collectors



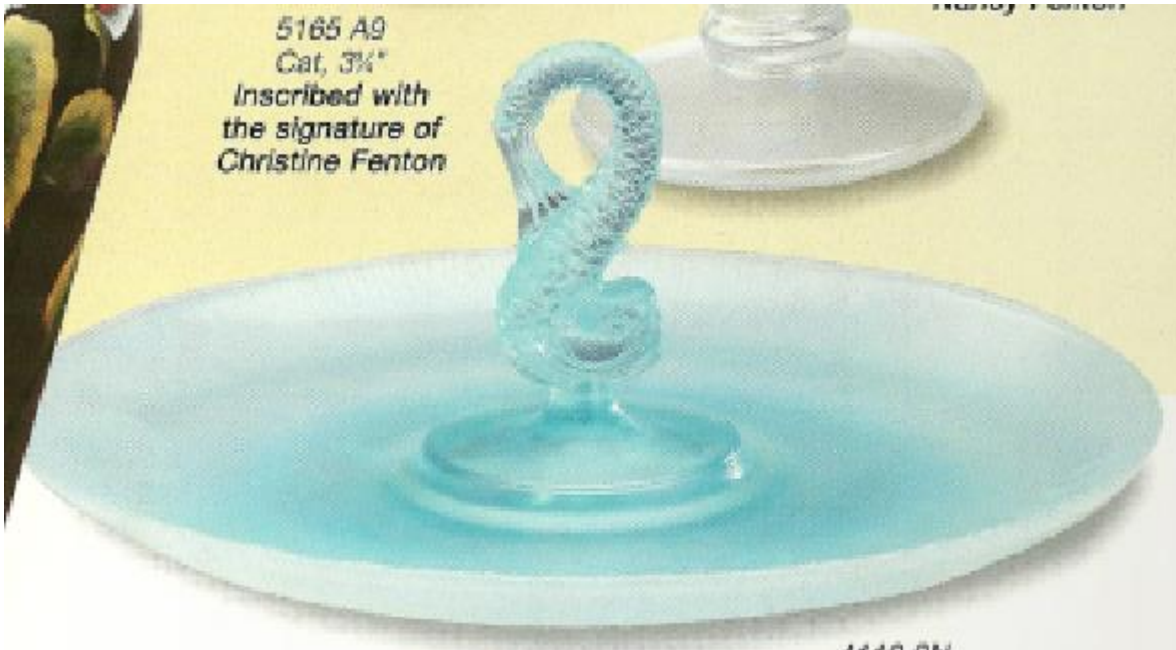
Rose Bowl, 8"  
with 'Tulip Delight'



Handkerchief Vase, 10"

# Page 3 - 2005-6 Aquamarine Opalescent Stretch

Common pieces appealing to stretch collectors

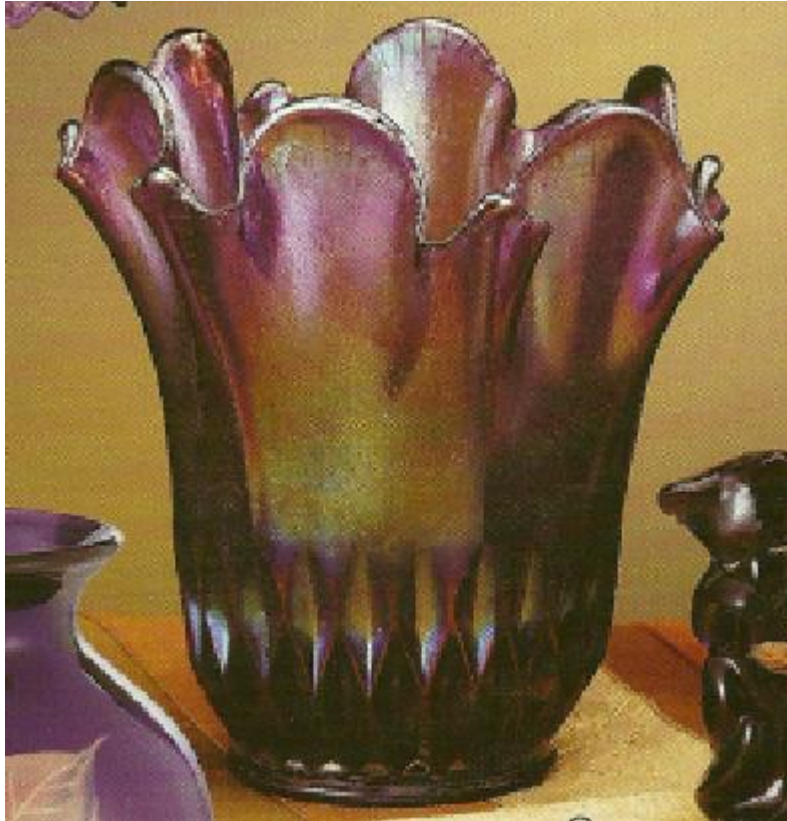


Sandwich Tray, 11"

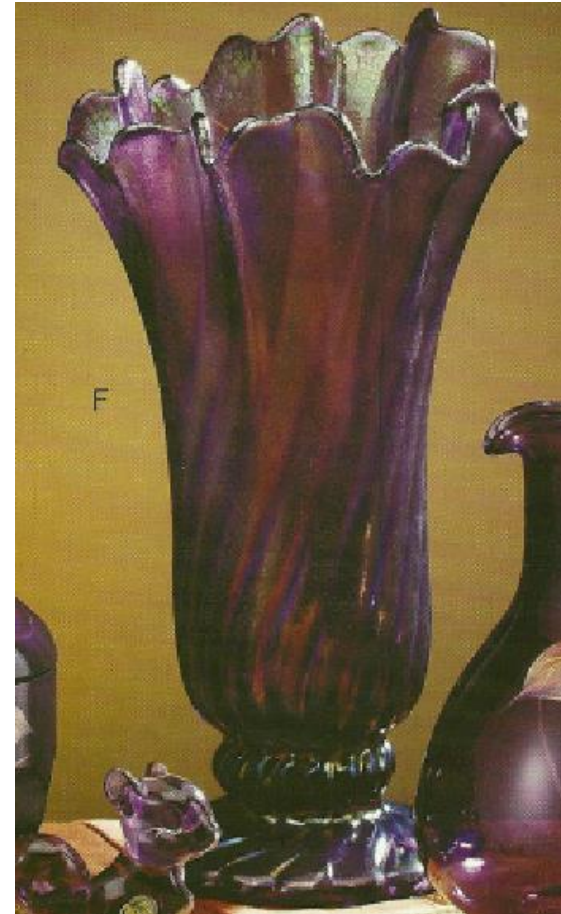


Candleplate, 7"  
with 'Sand Petals'

**Page 4 - 2007 Aubergine Stretch**  
Common pieces appealing to stretch collectors



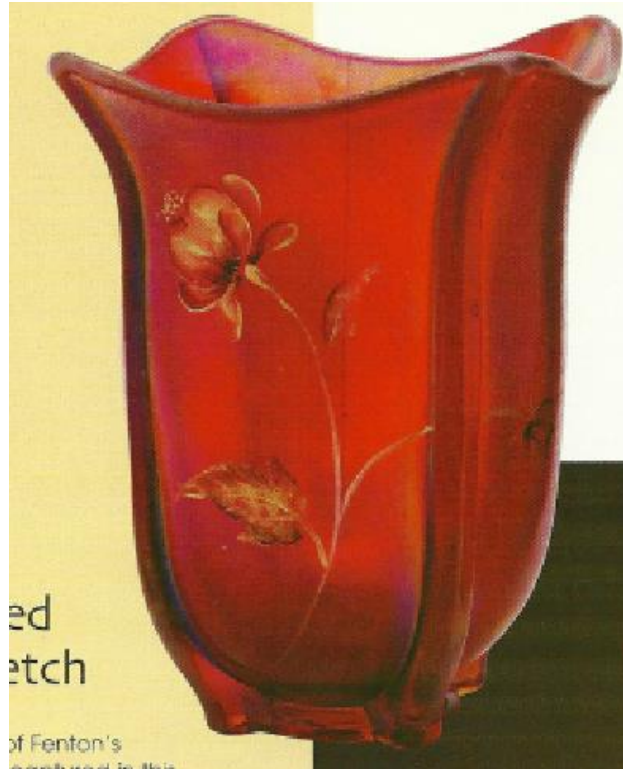
Diamond Swung Vase, 7"



Colony Swung Vase, 10-12"

## Page 5 - 2007 Red Stretch

Common pieces appealing to stretch collectors



Square Vase, 7 1/2 "  
with 'Golden Pods'



Colony Swung Vase, 10-12"

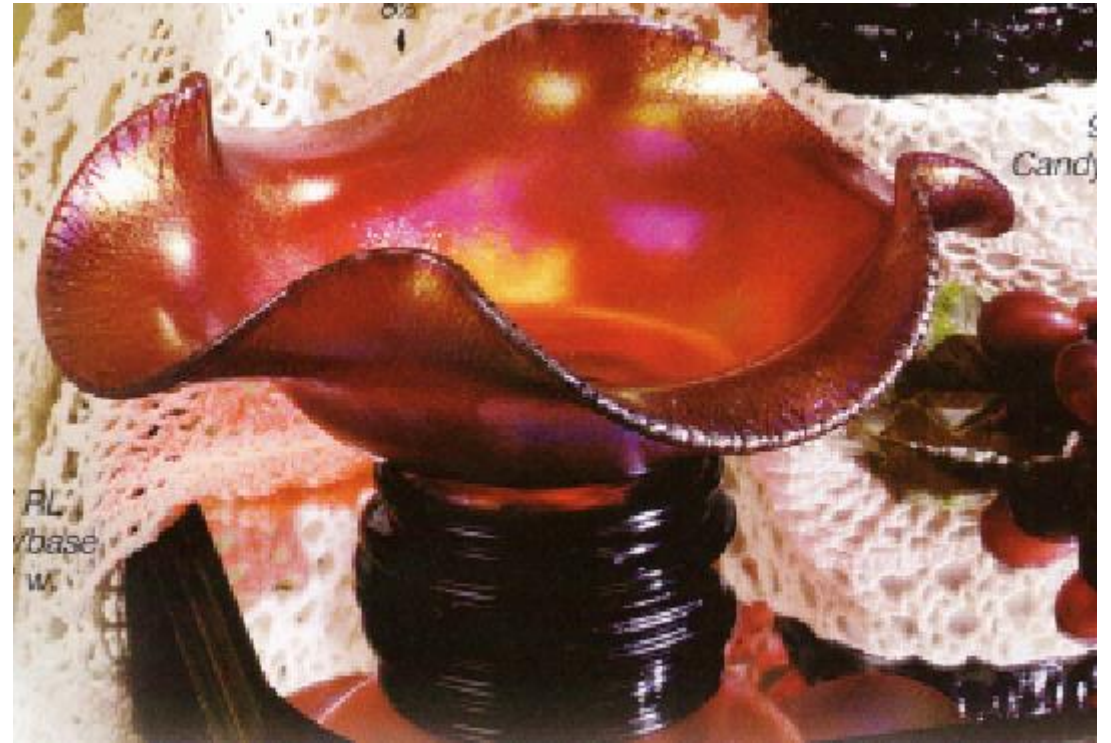
## Page 6 - 2003-2006 Ruby Amberina Stretch

Common pieces appealing to stretch collectors



Flip Vase, 7 1/2" with 'Wine Country'

2003



Cloverleaf Bowl, 10 1/2" wide

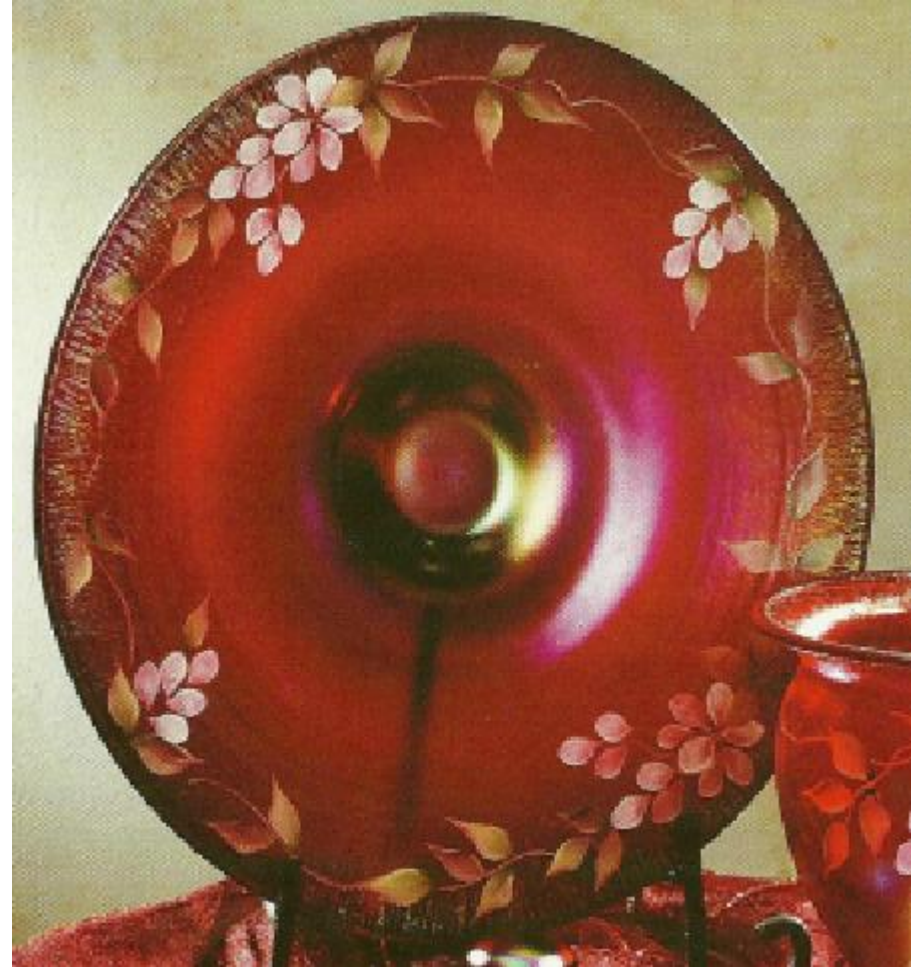
## Page 7 - 2003-2006 Ruby Amberina Stretch

Common pieces appealing to stretch collectors



Plume Vase, 8"

2004



Plate, 11" with 'Trailing Wisteria'

# Page 8 - 2003-2006 Ruby Amberina Stretch

Common pieces appealing to stretch collectors

2005 & 2006



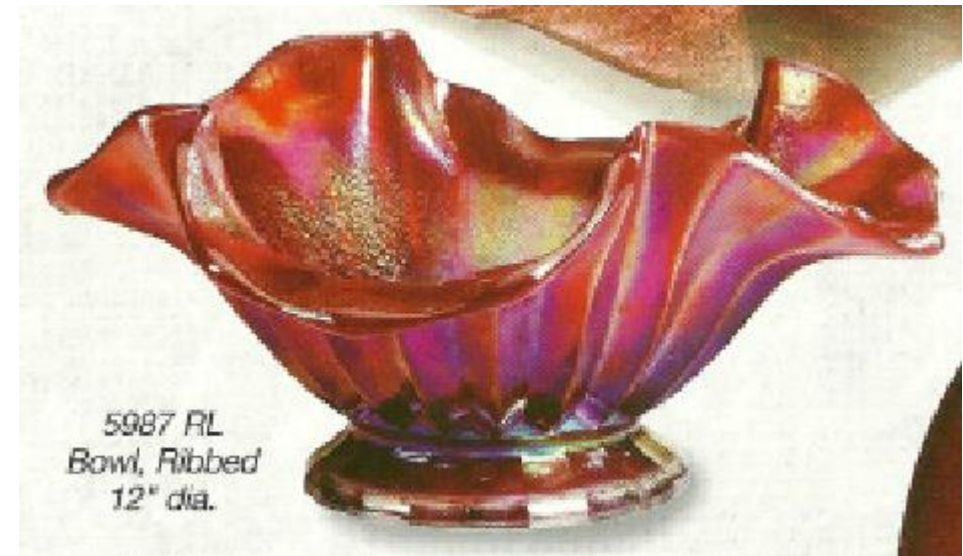
Dolphin Comport, 7" diam.

2005



Rose Bowl, 5" with 'Tuscan Charm'

2004 & 2006



Ribbed Bowl, 12" diam.

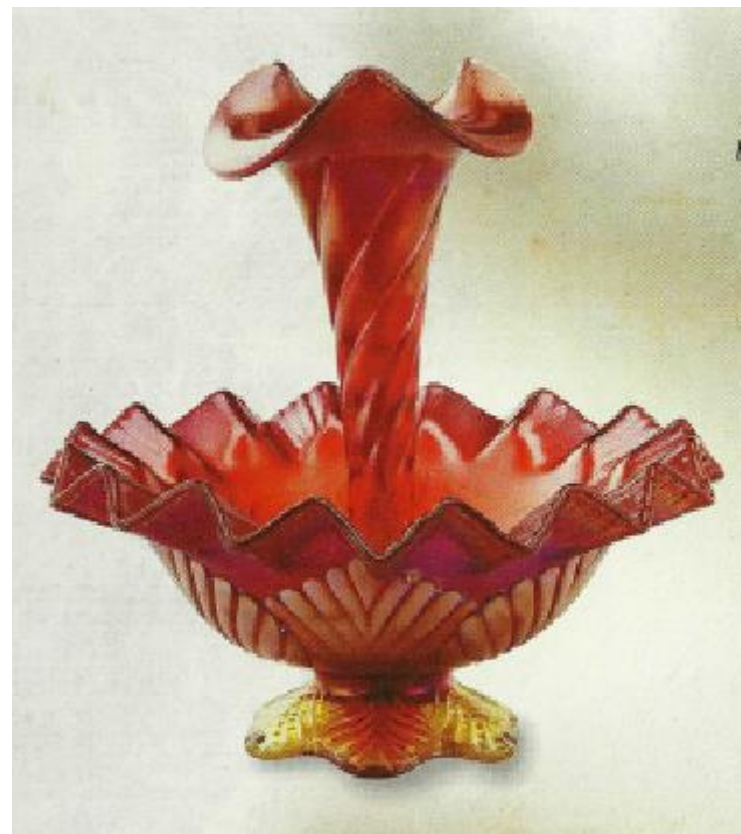




2003 – Cloverleaf Vase, 8 ½”



2004 – Basket, 7”



2004 – Swirl Epergne, 9”



2004 – Handkerchief Vase, 10”

22

### Looking Back on Opalescent Glass!

For nearly three decades (1880-1910), opalescent glass was at the forefront of the American glass tableware industry. Among the glassmakers who perfected and popularized opalescent glass were men such as Harry Northwood and Harry Beslow, both of whom influenced our company's founder, Frank J. Fenton, in the late 1890s and early twentieth century.

When Fenton first began to make glass in 1907, opalescent colors were among our initial products. Fenton factory manager and chemist Jacob Rosenthal had years of experience in the glass industry before his employment at Fenton... and he knew all the secrets of glassmaking!

The secret ingredient that makes this magical color was originally called "bone ash." The glass must be carefully chilled for a select number of seconds and then reheated to create the desired opalescent effect. Fenton artisans have mastered these techniques.



3088 BS  
Vase, 5 1/2"

## Tulip Delight on Rosemilk Opalescent Stretch

The soft appeal of creamy Rosemilk Opalescent provides the perfect balance for Kim Barley's vibrant tulip "Tulip Delight" design. The luxurious stretch finish achieved by Fenton is a hallmark of 100 years of glassmaking skills, passed from generation to generation.



7780 DS  
Flare Bowl  
w/stand, 9"

5066 NG  
Hummingbird, 4 1/2"

4206 BS  
Candy Box, Oval  
6 1/2" L



2753 BS  
Vase, 13"

New this year is the Lily of the Valley Rose Bowl, while the 6" vase and the Diapered Bell remain popular sellers from 2001.



9453 N  
Rose Bowl  
Lily of the Valley  
8 1/2" dia.

9144 NG  
Ringholder, 3"

0104 AS  
13 Pc. Tulip Delight on Rosemilk Opalescent Stretch and Rosemilk Assortment, New Shapes



23

## Tulip Delight on Rosemilk Opalescent Stretch

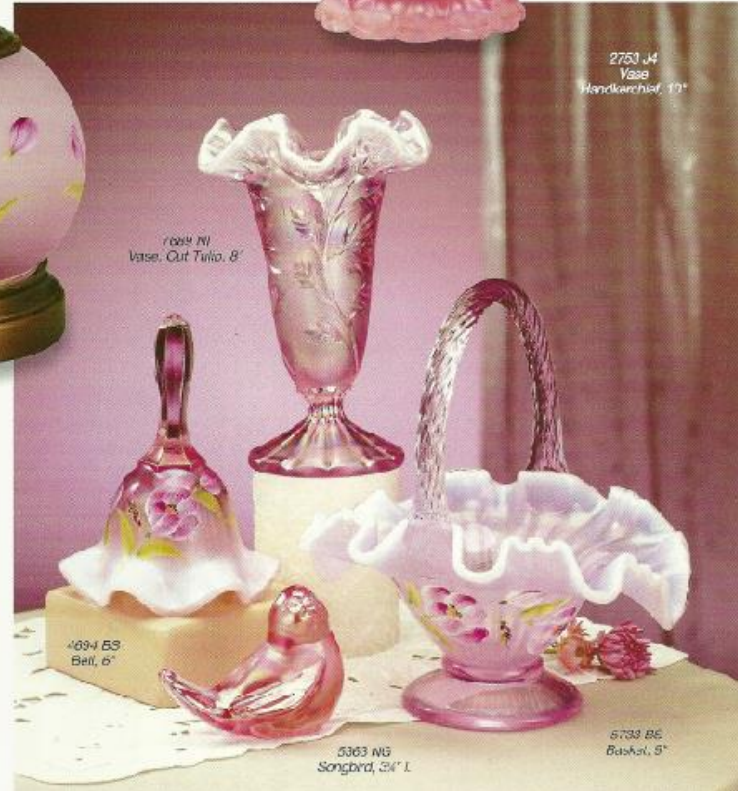
The soft appeal of creamy Rosemilk Opalescent provides the perfect balance for Kim Barley's vibrant tulip "Tulip Delight" design. The luxurious stretch finish achieved by Fenton is a hallmark of a century of glassmaking skills. Five new selections add to the charm of this vibrant color.



9507 DS  
Lamp  
Petite Double-Bell  
18"



4832 J4  
Bowl, Flared  
10 1/2" dia.



1004 N  
Vase, Cut Tulip, 8"

2753 J4  
Vase  
Handkerchief, 11"

4094 BS  
Bell, 6"

0294 AS  
11 Pc. Rosemilk Assortment

5363 NG  
Songbird, 2 1/2" L

5733 BS  
Basket, 5"

*Aquamarine  
Opalescent Stretch  
Second Generation*

Frank M. Fenton has always loved the possibilities of Aquamarine Stretch developed in Fenton in the mid-1950s. One of his favorite pieces is the Dolphin-handled Sandwich tray honored in this collection.

*Generations Collection*

*Introducing the 2005 Generations Collection*

Looking ahead to our 100th anniversary, we realized how much the past left behind us in present and future. One was the wisdom of the workability of the craft of glassmaking, even as the crafting process remains much as it has been for centuries. The same forces that drove the creation and evolution of our business influenced the styles and tastes of 100 years, and the traditions of design, styles and habits from Fenton's second generation through today's fourth generation. This introduction inspired the creation of the Generations Collection.

The Generations Collection features the simple Aquamarine Stretch of the 1930s through the Aqua Opalescent Mergold from the 1980s to the shimmering copper-gold of today's Malgolic.

0088 AS  
11 Pc. Generations Collection Assortment



5739 8N  
Bowl, Tray, 3"

4578 6N  
Bowl, 1 1/2"  
1 1/2" dia.

6488 0N  
Vase, Drapery  
11" x 12"



4112 9N  
Sandwich Tray, 11" x 8"  
Inscribed with the signature of Frank M. Fenton  
Wanted to save through May 15, 2006



1E

*Sand Petals on Aquamarine  
Opalescent Stretch*

Kim Barnev's Sand Petals design on luxurious stretch glass plays delicate florals against the velvety opalescence of Aquamarine Opalescent glass. The effect is simply breathtaking, and these pieces will coordinate beautifully with our Silver Sand collection.

0447 AS  
16 Pc. Aquamarine and  
Sand Petals Assortment



4244 7T  
Lamp, Metal  
18"



2077 4U  
Votive, Dragon  
"Snowday", 4 1/2"



8962 4V  
Ball, 6 1/4"



7333 4V  
Vase, "Astray"  
7 1/2"



3036 4S  
Hummingbird, 4 1/2"



4032 0N  
Bowl, Paralel, 10 1/2" dia.



0919 11  
Candlelate, 7" dia.

5200 4S  
Slipper, Dot, 6 1/2"



8190 7T  
Vase, Square  
7 1/2"



3214 A2  
Vase, 5"



2733 9N  
Vase,  
Hawkknob, 10"



5900 7T  
Vase, Trumpet, 7"



5700 7T  
Basket, 9 1/2"



0887 4U  
Ringholder, 2 1/4"



7150 7T  
Candy Box, 4 1/2"

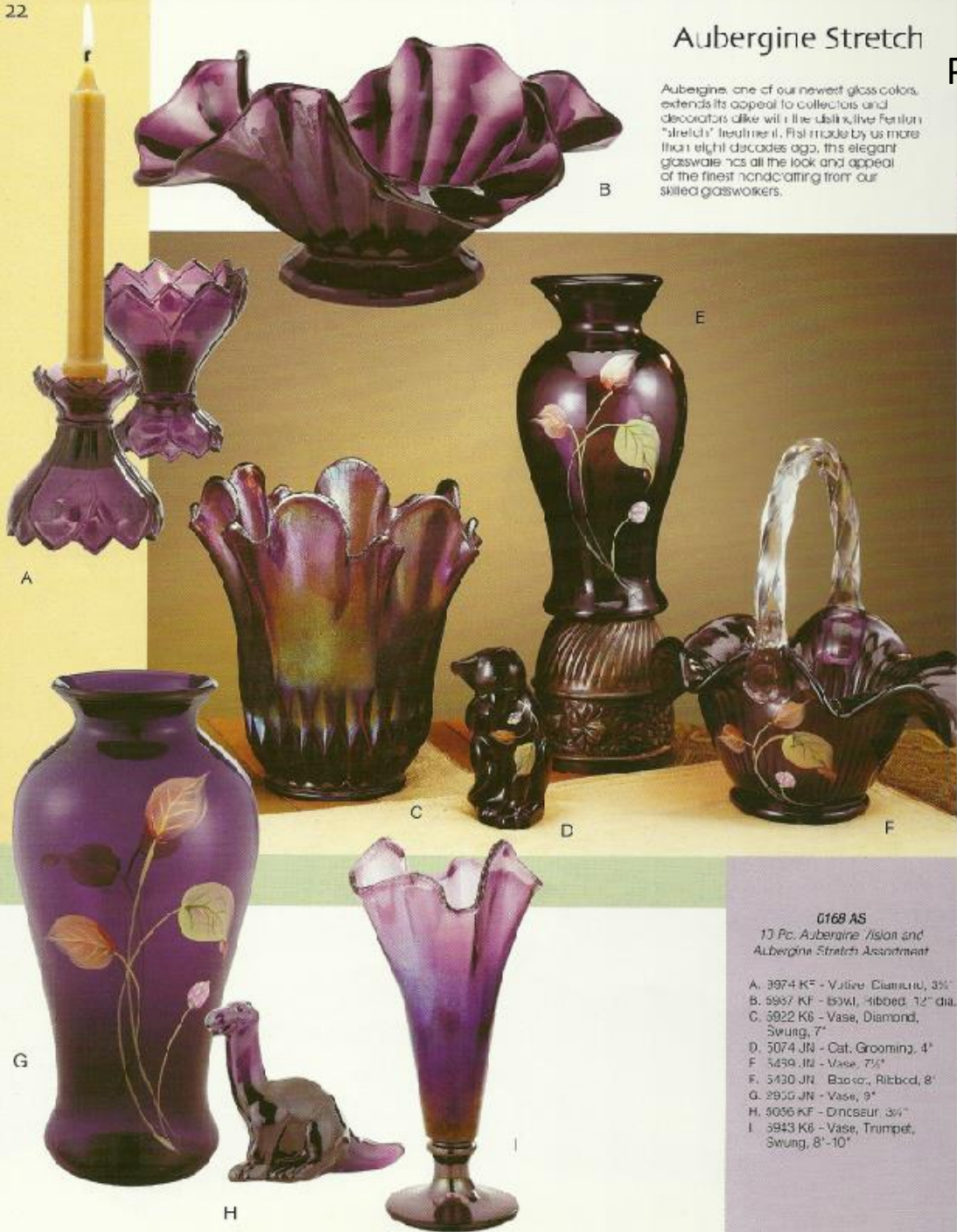


6074 7T  
Grooming Cat, 4"

1S

### Aubergine Stretch

Aubergine, one of our newest glass colors, extends its appeal to collectors and decorators alike with the distinctive Fenton "stretch" treatment. First made by us more than eight decades ago, this elegant glassware has all the look and appeal of the finest hand-crafting from our skilled glassworkers.



**0168 AS**  
10 Pc. Aubergine Vision and Aubergine Stretch Assortment

- A. 3974 KF - Vase, Diamond, 3 1/2"
- B. 5937 KF - Bowl, Ribbed, 12" dia.
- C. 5922 K6 - Vase, Diamond, Swung, 7"
- D. 3074 JN - Cat, Grooming, 4"
- F. 5439 JN - Vase, 7 1/2"
- F. 5430 JN - Basket, Ribbed, 8"
- G. 2950 JN - Vase, 9"
- H. 3096 KF - Dinosaur, 3 1/4"
- I. 5843 K6 - Vase, Trumpet, Swung, 8"-10"

### Vision on Aubergine

### The Jewel-like Beauty of Aubergine

Layers of sheer color create the complex shading in Stacy Wilkins' "Vision" motif on our elegant Aubergine glass. The fluid leaves and a pink Kousa pod are perfect complements to the elegant color of the glass.

- A. 4202 JN - Lamp, Dome, 15"
- E. 8155 JN - Vase, Square, 7 1/2"
- C. 5156 JN - Elephant, 3 1/2"
- D. 3470 JN - Candy Box, Colonial, 5 1/2"
- E. 5215 JN - Squirrel, 2 1/2"
- F. 6529 K6 - Vase, Colony, Swung, 10"-12"
- G. 0143 JN - Pitcher, 7"

**0167 AS**  
9 Pc. Vision on Aubergine Assortment

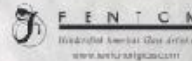


4

## Wine Country on Ruby Amberina Stretch

Select pieces of Ruby Amberina Stretch glass feature Frances Burton's new handpainted Wine Country decoration of lush grapes on a trellis.

Save 33%  
**032! AS**  
1.5 Pcs. Ruby Amberina Stretch  
Assortment



4810 UB  
Vase, Flip w/base  
7 1/2"



7703 UB  
Fairy Light, 3 pc.  
7 1/2"

5430 UB  
Basket, 8"  
Inscribed with the signature  
of Oren Fenton



7601 RL  
Epergne, 5 pc.  
13"

### Fenton Notes

#### The Art of Ruby Glass

In the first half of the twentieth century, glassmakers strived to make a uniform ruby color suitable for bellows signs, lantern globes, and auto tail lights. Today, Fenton's ruby glass is made with selenium and cadmium. This glass batch is sensitive to heat and extending color variations often occur. Collectors take great delight in the red-orange effect called "amberina."

5177 UB  
Cat, Alley  
11"

2026 RL  
Milk Dish  
4 1/2"

5295 LH  
Butterfly, 3"

5

### Historic Collection

Limited to one year of production.

### Fenton Notes

#### The Art of Stretch Glass

During the manufacturing process, these vases are sprayed with a mixture of metallic salts before being polished and brought to their final shape by a skilled glassworker called a Finisher. This finishing procedure often creates a myriad of variations and even a somewhat rough texture in the iridescent surface, particularly at the edges of the piece.



4810 RL  
Vase, Flip w/base  
7 1/2"

5025 LH  
Cat, 5"

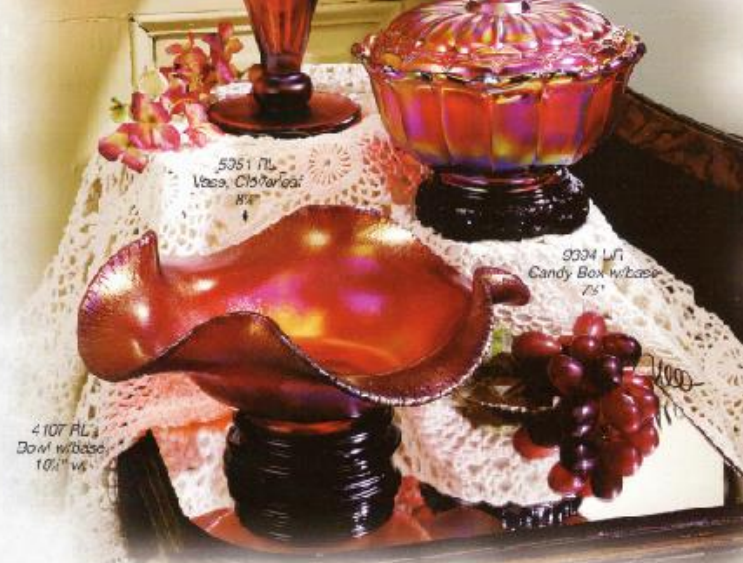
4633 RL  
Basket  
Potted Grape  
6 1/2"

0456 RL  
Vase, Swung  
3-10"

2077 RL  
Votive, Drapery  
4 1/2"

### Ruby Amberina Stretch

Fenton produced Stretch glass from 1917 through the 1920s, coinciding with the shift in the marketplace from ornate Victorian to streamlined Art Deco designs. The intense glow of Fenton's furnace is captured forever in these classic pieces.



5351 RL  
Vase, Cloverleaf  
8 1/2"

9334 LH  
Candy Box w/base  
7 1/2"

4107 RL  
Bowl w/base  
10 1/2"

# Ruby Amberina Stretch

Seven new shapes are showcased in this popular grouping. Select pieces are offered either plain or handpainted with Kim Barley's lovely "Trailing Mistletoe" design. Fenton produced Stretch glass from 1917 through the 1920s in the glamorous and elegant art deco style, and these pieces are treasured today as timeless classics. The intense glow of Fenton's furnaces is captured forever in the iridescence and lustre all inherent in the magic of Ruby Amberina Stretch glass.

0049 AS  
13 Pc. Ruby  
Amberina Stretch  
Assortment



7506 FL  
Basket, Melon, 8"

0948 FL  
Basket, Teardrop  
4 1/2"

5061 TR  
Sleeping Kitten,  
3 1/2" L.

7704 TR  
Rose Bowl,  
w/black base  
5"



6501 FL  
Epergne, Swirl, 9"  
Inscribed with the signature  
of Nancy Fenton  
(limited to 2500  
through May 15, 2004)



7143 TR  
Plate, 11" dia.  
(stand not included)



3560 TR  
Candy Box, 6"

1168 TR  
Vase, Flared, 6"



# Ruby Amberina Stretch

5958 RL  
Vase, Fluted  
8"

1168 RL  
Vase, Flared  
6"

2753 FL  
Vase,  
Hardkerchief  
10"

9506 UR  
Votive, Two-way  
4 1/2"

7704 UR  
Rose Bowl  
w/black base  
5"

5095 UR  
Puppy, 4"

5967 FL  
Bowl, Ribbed  
12" dia.

## Fenton Notes

### The Art of Ruby Glass

In the first half of the twentieth century, glassmakers strove to make a wide range of color suitable for railroad signals, lantern globes, and auto taillights. Today, Fenton's Ruby glass is made with selenium and cobalt. This glass batch is sensitive to heat, and interesting color variations often occur. Collectors take great delight in the sea-orange effect called "amberina."

7143 RL  
Plate, 11" dia.  
(stand not included)



5060 UR  
Candy Box, 6"



5083 UR  
Fish, 9 1/2" L.

## Tuscan Charm on Ruby Amberina Stretch

Kim Barley was inspired by the designs and colors of Tuscany to create the lush floral motif "Tuscan Charm," brought to life in rich metallic gold. New shapes include the Prism Box and Rose Bowl with base, both available undecorated or decorated, and the Delightful Elephant.

0106 AG  
14 Pc. Tuscan Charm  
and Ruby Amberina Stretch  
Assortment



4357 RL  
Compert, Dolphin, 7" dia.

7087 QY  
Box, Prism, 5 1/2"



7704 QY  
Rose Bowl,  
w/base, 5"

New shapes showcased in this popular assortment include the Dolphin Compert from an Indiana mould, and the Prism Box, designed by Jan Saffell. The Footed Basket is also new.



5973 QY  
Vase, Trumpet  
8 1/2"

4234 QY  
Basket, 7"

## Looking Back on Stretch Glass!

First made about 1915-16, "stretch glass," as it is now termed by collectors, was a special kind of iridescent glass. Among the original names for it are terms such as "Rainbow" and "Cobwebs." Its production was an important part of Fenton Art Glass during the 1920s, and these pieces are eagerly sought by today's collectors. Now, many decades later, we make our products in much the same way.

After the glass is sprayed with a solution of metallic salts to create the iridescent finish, the items are retested so that they can be reshaped. As a skilled glassworker, called a finisher, reshapes the item, the iridescent surface stretches, creating a myriad of striations and a texture that is a delight to see.

Rare red stretch glass from the 1920s inspired our efforts to create the Ruby Amberina color for our current production. Each piece reflects some of the great traditions of the American glass industry as well as our pride in handmade art glass.

*Check*

## Ruby Amberina Stretch



7704 LR  
Rose Bowl w/base, 5"

The intense glow of Fenton's furnaces is captured forever in the shimmering iridescence and luster inherent in the magic of Ruby Amberina Stretch. First produced in the early 1920s, the glamorous art deco style continues to captivate, and red remains the statement color in home décor.



3858 RL  
Vase, Plum, 8"

5987 RL  
Bowl, Ribbed, 12" dia.

7087 UR  
Box, Prism, 5 1/2"

**FENTON**  
Handcrafted American Glass Artistry  
[www.fentonartglass.com](http://www.fentonartglass.com)



3329 RL  
Basket, Footed  
7 1/2"

8596 UR  
Votive, Two-way, 4 1/2"



2753 PL  
Vase, 10"

# Looking Back on Stretch Glass!

First made about 1915-16, "stretch glass," as it is now termed by collectors, was a special kind of iridescent glass. Among the original names for it are terms such as "Rainbow" and "Cobweb." Its production was an important part of Fenton Art Glass during the 1920s, and these pieces are eagerly sought by today's collectors. Now, many decades later, we make our products in much the same way.

After the glass is sprayed with a solution of metallic salts to create the iridescent finish, the items are reheated so that they can be reshaped. As a skilled glassworker, called a finisher, reshapes the item, the iridescent surface stretches, creating a myriad of striations and a texture that is a delight to see.

Rare red stretch glass from the 1920s inspired our efforts to create the Ruby Amberina color for our current production. Each piece reflects some of the great traditions of the American glass industry as well as our pride in handmade art glass.

2006

## Ruby Amberina Stretch



7704 UR  
Rose Bowl w/ base, 5"

The intense glow of Fenton's furnaces is captured forever in the shimmering iridescence and luster inherent in the magic of Ruby Amberina Stretch. First produced in the early 1920s, the glamorous art deco style continues to captivate, and red remains the statement color in home décor.



3936 RL  
Vase, Fluted, 5"

5987 RL  
Bowl, Ribbed, 12" dia.

7087 UR  
Box, Prism, 5 1/2"



www.fentonartglass.com

3329 RL  
Basket, Footed  
7 1/2"

9536 UR  
Votive, Two-way, 4 1/2"

2753 PL  
Vase, 10"



2007

## Golden Pods on Red Stretch

Inspired by the look of flowers from the Art Nouveau period, Kim Barley created this simple, yet exciting and elegant handpainted floral motif. Sweeping strokes and sheer colors reflect the artistry of Fenton's talented decorators.

### Red Stretch

All the fire of Fenton's furnaces is captured in this vivid red glass, reminiscent of our initial production in the 1920s. After being fired with a spray of metallic salts, the glass is brought to its final shape. This process creates the "stretch" look so popular with collectors and decorators.



0170 AS  
7 Pc. Red Stretch Assortment

- A. 8155 AF - Vase, Square, 7 1/2"
  - B. 8155 RL - Vase, Square, 7 1/2"
  - C. 5383 AF - Songbird, 9 1/2"
  - D. 4829 RL - Bowl, Footed, 8 1/2" dia.
  - E. 4178 UR - Vase, Heritage, 5 1/2"
  - F. 6829 RL - Vase, Colony, Swing, 10"-12"
  - G. 4198 AF - Basket, 7 1/2"
- Lynn Fenton Signature