



THE STRETCH GLASS SOCIETY

A charitable organization founded April 20, 1974, in Denver, PA.

www.StretchGlassSociety.org • Follow us on Facebook

STRETCH OUT DISCUSSION

Later Period Fenton Stretch Glass

Will be the topic of our ***Stretch Out*** call on Thu, 10/12/17,
at 8 pm Eastern, 7 Central, 6 Mountain and 5 Pacific Time.

All are welcome to join in by calling

415-464-6800, followed by **ID: 04211974#**.

(This is our second discussion on the topic of later period stretch glass. The first call, in May, featured: Samples and trial pieces made by Fenton in 1975 and 1976; Velva Rose Stretch, an original color, made in 1980 to celebrate Fenton's 75th anniversary; and Velva Blue Stretch, a new color introduced shortly thereafter.)

On this call, we'll discuss these four colors of stretch glass made between 1994 and 2004.

- ❖ **Stiegel Green Stretch**, a new color, was introduced in 1994;
- ❖ **Sunset Stretch**, another new color, in 2002; and
- ❖ **Apple Green Stretch**, also a new color, in 2004.
- ❖ **Celeste Blue Stretch**, an original color, was re-introduced in 1995 to celebrate Fenton's 90th anniversary. New pieces in this same color were put into the line again in 2004. Since there are more of these pieces, they'll be discussed together after the other three colors.

Please note that selected common pieces appealing to stretch glass collectors, are pictured on the first five pages.

Complete catalog pages for these colors are at the end.

1994 - Stiegel Green Stretch

Common pieces appealing to stretch collectors



5 pc. Water Set



Comport, 5 1/2"



Bowl, 12"



Handkerchief Vase, 8"
(with 'Wind Flowers')



Cupped Bowl, 5" and
Dolphin Comport, 5 ¼"
both with 'Baroque Floral'

2002 – Sunset Stretch

Common pieces appealing to stretch collectors



4601 SW
14 Pc. Punch
Bowl Set,
Paneled
Grape, 9 ½" h. x 13 ½" w.
Includes punch
bowl, base and
12 punch cups

5158 S6
Elephant,
4"

F E N T O N
Handcrafted American Glass Artistry

4642 SX
Punch Cup, 2 ½"
(2)

14 Pc. Paneled Grape Punch Bowl Set

2004 – Green Apple Stretch

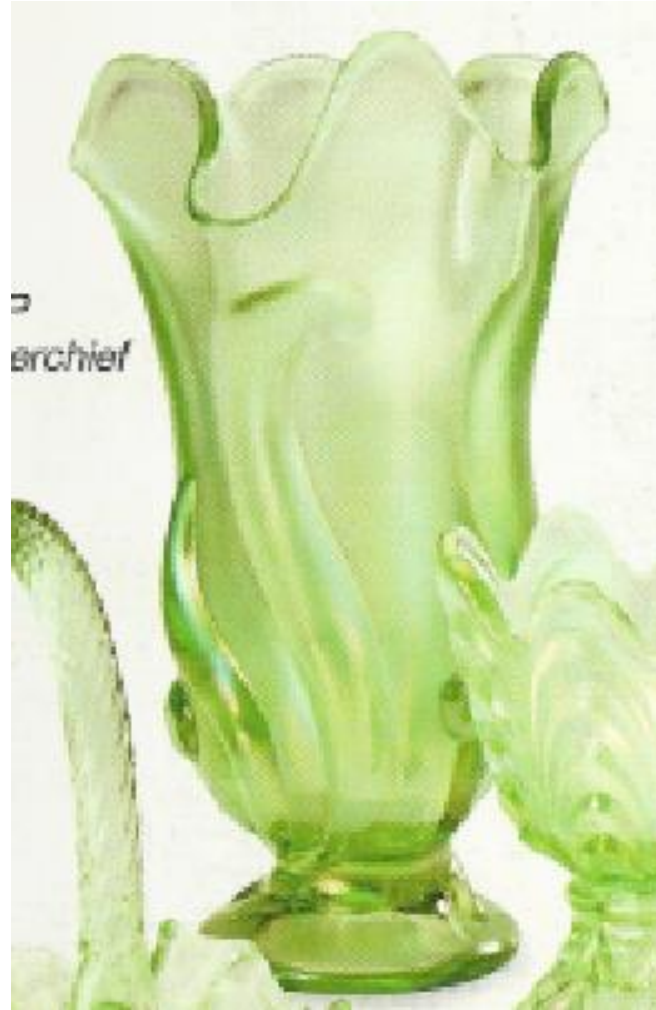
Common pieces appealing to stretch collectors



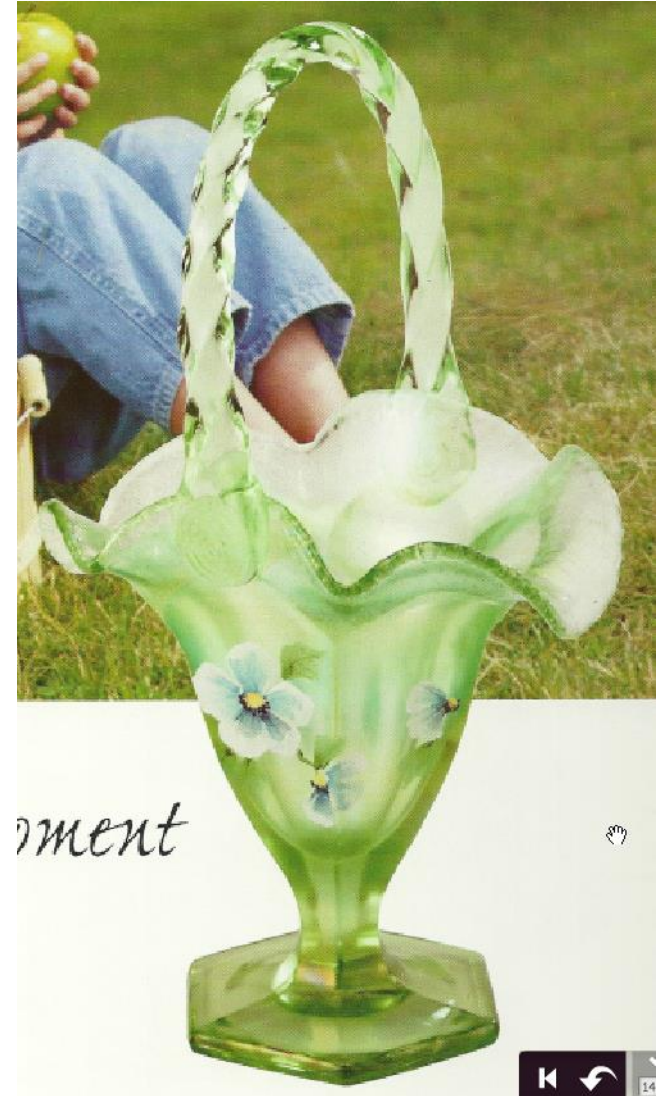
Rose Bowl, 5 ½"
with 'Pansy Morning'



Rose Bowl, 3 1/2"



Handkerchief Vase, 10"



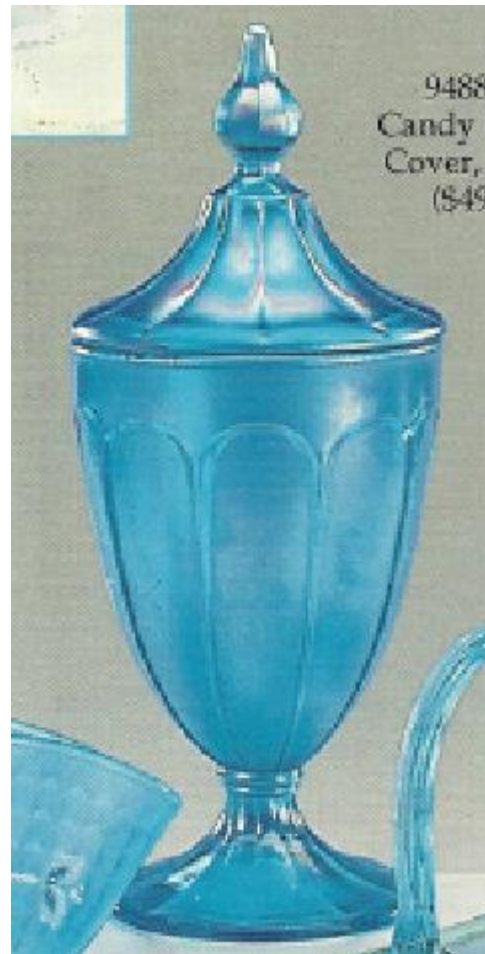
Paneled Basket, 10"
with 'Pansy Morning'

1995 - Celeste Blue Stretch

Common pieces appealing to stretch collectors

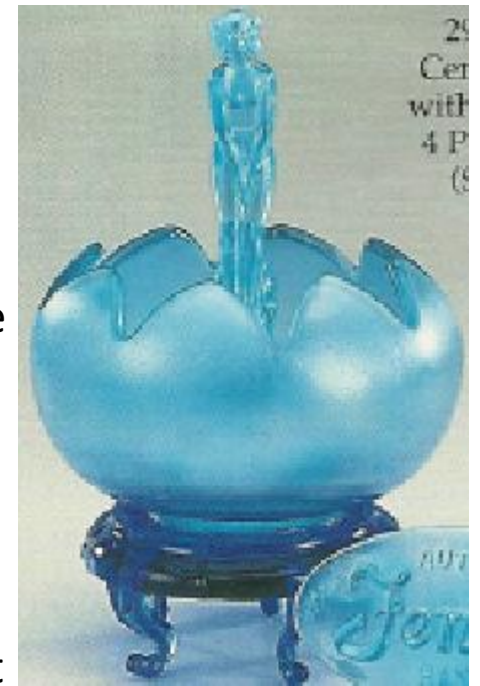


Vase, 7 ¼" and Basket, 9 ½"
with 'Coralene'



Candy Jar, 10 ½"

4 Pc. Centerpiece
with Nymph



Lincoln Inn Water Set



2004 - Celeste Blue Stretch (again)

Common pieces appealing to stretch collectors



Cloverleaf Vase, 8 ½"



Candy Box, 6"
with 'Dancing Daisies'



Rose Bowl, 3 ½" and
Footed Vase, Diamond Optic, 8"

Stiegel Green Stretch – 1994 Catalog Pages

FENTON
1994 Historical Collection
A LIMITED EDITION OFFERING
(This color in these molds will be produced only through November 1994.)

Stiegel Green Stretch
The Stiegel Green color developed in 1933 is combined with the stretch glass treatment so popular from the 1920's. Stretch glass is produced by spraying with metallic salts and carefully reheating to a satin finish. Most pieces are then flared or crimped in some way causing the iridescent skin to "stretch." Nine new items have been added for second half, six of which are handpainted with a beautiful floral called "Wind Flowers". These pieces are handpainted and then have a ground glass sprinkled on the pattern for texture and dimension.

Refer to 1994 Limited Editions Price List to Order.

5562 SS Jug, 8"
7601 SS 5 Pc. Epergne Set, 13"
5560 SS 5 Pc. Water Set
5561 SS Goblet, 6 1/2"
5564 SS Compot, 3 1/2"
5553 SS Vaso, Jack in the Pulpit, 7"
3000 SS Basket, 7"
5551 SS Basket, 7"
9/99 SS Logo, Fenton, 5" w.

2799 SS Box w/ Lion Cover, 5" w.

Stiegel Green Stretch
An exotic glass treatment from the past

Family Signature Series
The Family Signature Series is comprised of a few select pieces that represent the glass worker's and glass decorator's finest work. Dated 1994, the two special pieces at right will be inscribed for a limited time with the signature of a second generation member of the Fenton Family.

1560 CW Pitcher, 5 1/2" Handpainted Cranberry (Inscribed with signature of Bill Fenton, Chairman of the Board.)

4602 SS Urn w/ Cover, 12"

2773 SS Bowl, Open Edge, 8"

4802 SS Epergne, 2 Pc. Diamond Lace

2759 ST Rose Bowl, 3 1/2"

5607 ST Bell, Aurora, 7"

5526 SS Candlesticks, 4"

5229 S1 Sparrow, 5"

4381 ST Candy w/ Cover, 5 1/2"

Stiegel Green Stretch
The Stiegel Green color developed in 1933 is combined for the first time with the stretch glass treatment so popular from the 1920's. Stretch glass is produced by spraying with metallic salts and carefully reheating to a satin finish. Most pieces are then flared or crimped in some way causing the iridescent skin to "stretch."
Stiegel Green Stretch...an exotic glass treatment from the past.

Refer to Limited Editions 1994 price list to order.

FENTON
1994 Historical Collection
A LIMITED EDITION OFFERING
Color to be offered through 1994--on June 1, 1994, offering to be "finished" for June-November, 94 selling.

Set # 55 - 0559 AS
12 Pc. Stiegel Green Stretch Assortment
Includes each of all 12 items.

5581 SS Basket, 7d., 9"
5601 SS 5 Pc. Epergne Set, 13"
5560 SS 5 Pc. Water Set
5561 SS Goblet, 6 1/2"
5564 SS Compot, 3 1/2"
5553 SS Vaso, Jack in the Pulpit, 7"
3000 SS Basket, 7"
5551 SS Basket, 7"
9/99 SS Logo, Fenton, 5" w.

Baroque Floral on Sunset Overlay

Creamy milk glass is encased in a thin layer of sunset to create a new sensation. Sunset Overlay, a fresh twist on a classic color. Inspired by country mornings in the early spring, Designer Frances Burton created a swirl of flowers in winterberry cream and green to bring out the beauty and dimension of this delicate color.



608C SS
Wavecrest
Box w/
Cover, 8 1/2"

Save 3%
on Sunset
Assortment
Historic Collection
limited to one year
production.

Sunset Overlay NOT Stretch
(but paneled grape vase might be?)



5213 SS
Vase, 14 1/2"



6454 SS
Pitcher, Melon,
5 1/2"



6795 SS
Lamp,
Student, 18"



2019 SW
Basket, 6"



5751 SW
Vase,
Paneled
Grape,
8 1/2"



3301 SX
Perfume, Oval
Floral, 5"

7278 SW
Pellie Bell,
Beauty, 4"



0499 SX
Logo, 3 1/2" x 5 1/2"

Sunset Stretch

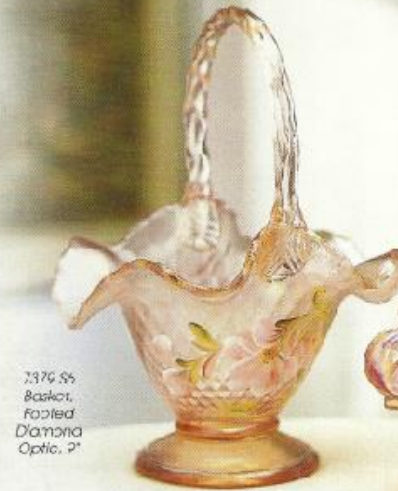
The ever changing hues of sunset . . . from peachy-pink and orange blush to the beige-gold of twilight . . . all captured forever. Like a sunset, the shades vary and each handcrafted piece is unique. A similar color was first introduced in the mid 1920's as a stretch glass treatment. A special blend of metallic salts is sprayed on the hot glass before the piece is reheated and forced to its final shape. As the finisher fires the glass, it stretches the metal coating, resulting in the captivating "stretch" look.



7513 SS
Dolphin Compot, 5 1/2"
Inscribed with the
Signature of
George Fenton



7705 SS
Cupped Bowl
w/ Base, 8"



7379 SS
Basket,
Folded
Diamond
Optic, 2"



7680 SX
Candy Box w/
Cover, Paneled
Grape, 8"



4501 SW
14 Pc. Punch
Bowl Set,
Paneled
Grape, 9 1/2" H. x 13 1/2" W.
Includes punch
bowl, base and
17 pieces cups

5158 SS
Elephant,
4"



4642 SX
Punch Cup, 2 1/2"
(2)

Apple Green Stretch – 2004 Catalog Pages



a Fenton moment



F **FENTON**
Handcrafted American Glass Artistry

Green Apple Stretch

0043 AS
15 Pc. Crown
Apple
Stretch
Assortment

Inspired by Florentine Green from the 1920s, this fresh new color blends perfectly with the lively colors now popular in home décor. A delicate "Pansy Morning" design by Stacy Williams enhances the sparkling Green Apple color—simply delightful when paired with Celeste Blue Stretch or pair with Rosemilk for a fancy retro look.



Celeste Blue Stretch – 1995 Catalog Pages

F

FENTON

90th Anniversary Collection.

Celeste Blue Stretch

Celeste Blue celebrates 90 years of quality craftsmanship. This exciting color was first developed in 1921 and has not been offered in the Fenton line since the mid 20's.

2/67 JB
Vase, 4 1/2"
(\$32.50)



1137 JE
Top Hat, 4 1/4"
(\$49.50)



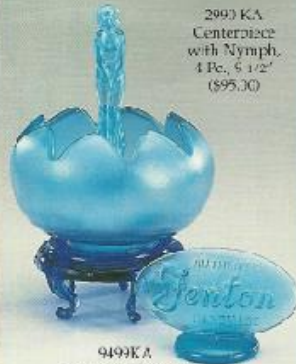
1134 KA
Compot, 5 1/4"
(\$32.50)



Two metallic sprays and two extra re-heating steps are required to develop Celeste Blue's textured surface.

After reheating and spraying, it is reheated again and the final shape is changed by the finisher to stretch the metallic surface into sparkling fissures to give us the "stretch treatment."

The finisher forms the piece to its final shape using a cherry wood paddle or age old tool called "Pucel as."



2993 KA
Centerpiece with Nymph,
4 Pc., 6 1/2"
(\$95.00)

Centerpiece Bunch on Stand with September Morn Nymph

First used as a set with these three moulds in the early 1930's. The September Morn Nymph is patterned after a figure in a painting by the same name. Painted by Paul Chabas in 1912, it now stands in the Metropolitan Museum of Art. It first appeared in the Fenton line in 1928 as a decorative centerpiece.



The Gatherer skillfully gathers a fiery gob of molten glass from the furnace to begin each piece.

9499 KA
Logo, Oval, 5" w.
(\$25.00)



9488 KA
Candy Box w/
Cover, 10 1/2"
(\$49.50)

1136 JE
Vase, Flared, 6"
(\$49.50)



1147 JE
Basket, Footed,
7"
(\$37.50)



2911 KA
Candlesticks, 3"
(\$49.50 pr.)



All prices are suggested retail



7601 KA
Epergne, 5 Pc. Set,
13"
(\$185.00)

The Epergne

This epergne was first offered by Fenton in 1926 and was reproduced to look like the epergnes made in the 19th century.

1140 JE
Vase w/ Cobalt
Base, 7 1/4"
(\$59.50)



1135 JE
Family
Signature
Basket,
Diamond,
9 1/2"
(\$75.00)



This basket is limited to sales to the Fenton dealer through 4/30/95.

5667 JE
Bell, Aurora, 7"
(\$36.00)



9001 KA
Water Set, Lincoln
Ltr., 5 Pc. Set, 7"
(\$135.00)



9009 KA
Tumbler,
Lincoln Ltr.,
4 1/2"
(\$19.50)

The Basket Handler

Great skill is required of the craftsmen who put handles on baskets. In very fast order, the handler attaches a glowing ribbon of glass to a piece, forms a loop and attaches the other end. He then works the glass into a graceful arch. This whole process must be done in about 30 seconds before it becomes unmovably chilled.



Each Fenton basket bears an individual "handler's mark." The handler attaches the handle with a stamp engraved with his personal mark. The design of the mark is his alone. Thus, each Fenton basket is personally signed and can always be traced back to the craftsman who created it.

Family Signature Basket

This special basket is inscribed with the signatures of two second generation family members; Bill Fenton (Chairman of the Board and Past President) and Frank M. Fenton (Past Chairman and President).

The mould for this basket was made circa 1926 as a Candy Box and Vase but has never been made into a basket. The diamond interior is actually a series of small pyramids, chipped into the mould by hand.

Handpainted Signature Basket

This handpainted decoration was created by Martha Reynolds to capture the artistic spirit of the 1920's. The raised "Coralene" texture is achieved with ground up glass and adds texture and dimension to the piece. Each handpainted piece is signed by the decorating artist.

Celeste Blue Stretch

Crap white cables float on a sky of Celeste Blue in Stacy Williams' "Dancing Daisies" design. Accents of bright spring green allow these pieces to harmonize perfectly with our Green Apple color statement.

0047 AS
14 Pt. Celeste Blue Stretch
Assortment



5951 KP
Vase, "Coverleaf", 8 1/2"

1186 KP
Vase, Footed
6"

6030 KP
Basket, 7"

Fenton Notes

The Art of Celeste Blue Glass

First made in the 1930s, this color traces its name from the Italian celeste (pronounced "say-less-ay"), which means "celestial, divine or heavenly." We couldn't agree more! The special iridescence is a real tribute to the artisans who, almost a century ago, when this glass was first produced,



5430 KP
Basket, 8"

5090 KP
Candy Box, 6"

9164 K1
Ringholder, 5"

5065 KP
Cat, 5"

Fenton Notes

The Art of Stretch Glass

During the manufacturing process, these items are sprayed with a mixture of metallic salts before being reheated and brought to their final shape by a skilled glassworker called a Finisher. This finishing operation often creates a myriad of iridescence and gives a somewhat rough texture to the iridescent surface, particularly at the edges of the piece.



5451 KA
Vase, Obverseleaf
8 1/2"

6095 KJ
Hammingbird
3 1/2"

5250 K4
Slipper, Cat, 6" L

6538 KA
Ball, Snarey
8"

4566 K1
Basket, Paroled Craps
4 1/2"

9598 K4
Vase, Two-way
4 1/2"



1765 JJ
Box, Paroled, 6"

5748 K4
elephant, baby
3 1/2"



1168 KA
Vase, Footed
4"

2759 KA
Footed Bowl, 3 1/2"

6250 Jm
Slipper, Cat, 6" L

5470 KA
Basket, 8"